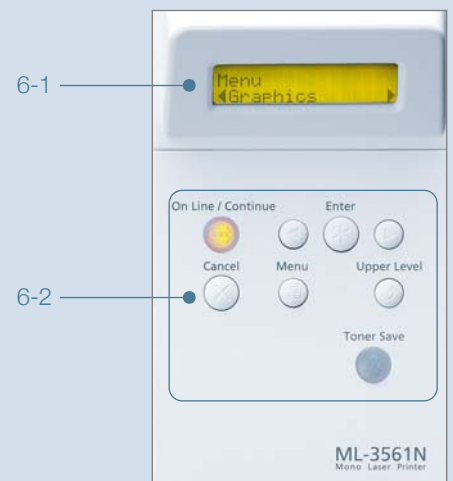
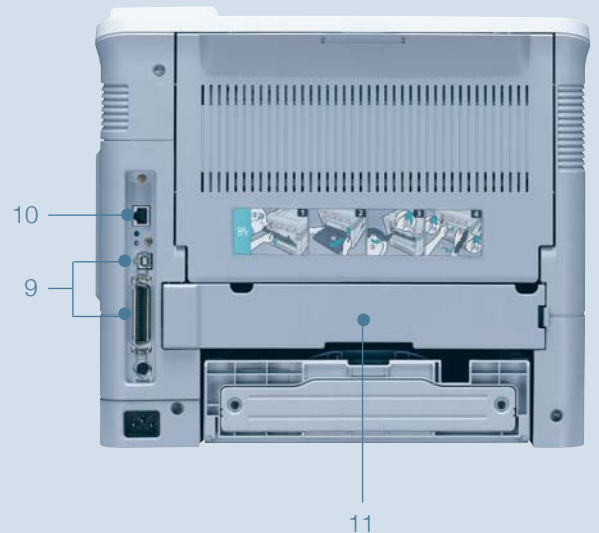


# An efficient professional printing centre with convenient, easy-to-use features and network capabilities.

## Samsung Laser Printer ML-3560/3561N/3561ND.

The new Samsung ML-3560/3561N/3561ND monochrome laser printer series packs professional quality printing into a laser printer. Suitable for any corporate setting, it gives you high performance, easy-to-use features in a truly stylish design from Samsung to complement any workplace.

1. 250-sheet (face down) top **Output Tray**
2. Easy to access toner cartridge **Top Cover**
3. 100-sheet **Multi Purpose Tray**
4. Standard 500-sheet **Input Tray** with Paper Level Indicator
5. Optional 500-sheet **Input Tray** with Paper Level Indicator
6. Easy to use **Control Panel**
  - 6-1. 2-lined LCD Display
  - 6-2. Control Button
7. Optional 40 GB **Hard Disk, Network Print Server**
8. **On / Off Switch**
9. **USB 2.0 and IEEE 1284 Parallel Interface**
10. **Network** Interface
11. **Duplex Slot Cover**



\* The figure above shows on ML-3560 series with all available options.

# Specifications

	ML-3560	ML-3561N	ML-3561ND
<b>Print</b>			
Speed <sup>1)</sup>	Up to 33 ppm in A4 (35 ppm in Letter)		
Resolution	Up to 1,200 x 1,200 dpi effective output		
First Print Out Time	9 seconds (from Ready)		
<b>Controller</b>			
Processor	Samsung 400 MHz		
Memory	32 MB (Max. 288 MB)		
Emulation	PostScript3, PCL6, IBM ProPrinter, EPSON		
Interface	USB 2.0, IEEE1284 Parallel	USB 2.0, IEEE1284 Parallel, Ethernet 10/100 Base TX	
Fonts	45 Scalable, 1 Bitmap, 136 PostScript3 Fonts		
OS Compatibility	Windows 95 / 98 / Me / NT4.0 / 2000 / XP / 2003 Server, Various Linux OS including Red Hat, Caldera, Debian, Mandrake, Slackware, SuSE and Turbo Linux, Mac OS 8.6~9.2/10.1~10.4		
<b>Paper Handling</b>			
Input Capacity	500-sheet Cassette Tray, 100-sheet Multi Purpose Tray		
Output Capacity	250-sheet Face Down, 100-sheet Face Up		
Duplex	Optional	Standard	
Media Size	76 x 127 mm (3" x 5") ~ 216 x 356 mm (8.5" x 14")		
Special Media	Transparencies, Labels, Post Cards, Envelopes		
<b>General</b>			
Dimension (W x D x H)	396 x 453 x 353 mm (15.6" x 17.8" x 13.9")		396 x 526 x 353 mm (15.6" x 20.7" x 13.9")
Weight	17 Kg (37.5 lbs)		18.2 Kg (40.1 lbs)
Power Consumption	Less than 600W		
Noise Level <sup>2)</sup>	Less than 55 dBA (Printing) Less than 35 dBA (Standby)		

<b>Supplies and Options</b>			
I Consumables	6,000 pages @ ISO 19752 5% Coverage		ML-3560D6
	12,000 pages @ ISO 19752 5% Coverage		ML-3560DB
II Memory	16 MB SDRAM		ML-MEM100
	32 MB SDRAM		ML-MEM110
	64 MB SDRAM		ML-MEM120
	128 MB SDRAM		ML-MEM130
	256 MB SDRAM		ML-MEM140
III Network	Internal Ethernet 10/100 Base <sup>3)</sup>		ML-00NF
	Internal Ethernet 10/100 Base + 802.11 a/b/g Wireless LAN <sup>4)</sup>		ML-00LF
IV Duplex	Duplex printing unit <sup>5)</sup>		ML-3560U1
V HDD	40 GB Hard Disk Drive		ML-3560MH
VI Second Cassette Feeder	500 sheets Second Cassette Feeder		ML-3560S5

						
Toner Cartridge	Memory	Wired Network	Wired & Wireless Network	Duplex	Hard Disk	Second Cassette

❖ Please visit [www.samsungprinter.com](http://www.samsungprinter.com) to download the latest software version.

1) Print speed will be affected by Operating System used, computing performance, application software, connecting method, media type, media size and job complexity.

2) Sound Pressure Level, ISO7779

3) available on ML-3560

4) available on ML-3560, ML-3561N, ML-3561ND

5) available on ML-3560, ML-3561N

Distributed by

Design and Specifications are subject to change without notice.  
Trademarks of other companies mentioned in these publications are hereby recognized and acknowledged.



The Professional Solution Centre with  
Reliable Performance & Efficient Functions.

Samsung Laser Printer Series **ML-3560/3561N/3561ND**



# Reliable Performance

## Outstanding Features Create a Reliable Performance

### 1. Incredible Speed

Lasers are synonymous with speed and the Samsung ML-3560 series exceeds expectations. Make your work more reliable with the incredible printout speed of 33 ppm!

### 2. Best Output

Fast, productive output depends on processing speed and adequate memory. With a 400 MHz processor and 32 MB memory expandable to 288 MB, this printer performs efficiently under a variety of circumstances.



Powerful Processor  
**400 MHz CPU**

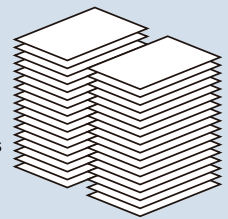
Worry-free printing with memory  
**32 MB (Max. 288 MB)**

### 3. Maximum monthly duty cycle up to 150,000

The ML-3560 series features high performance printers with huge monthly duty cycles. You can meet heavy printing requirements of medium office.



Max.  
150,000 pages



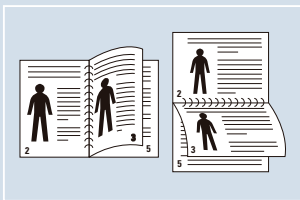
# Efficient Functions

## Work Efficiently with Superior Functions

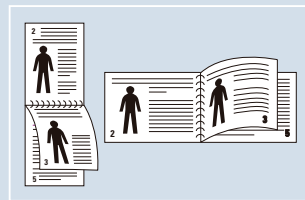
### 1. Advanced Printing

#### • Duplex Printing

Enhance your efficiency with automatic two-sided printing. Create your own document with options such as long edge and short edge printing. In addition, two-sided printing will save paper, allowing for convenient storage and portability.



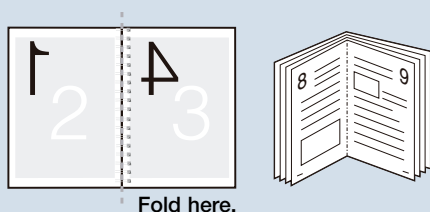
Long Edge



Short Edge

#### • Booklet Printing

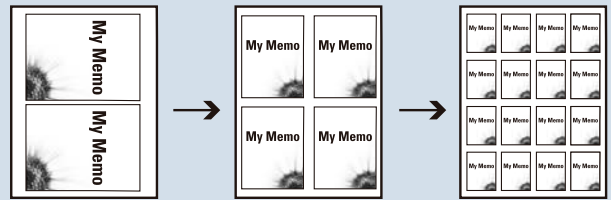
The ML-3560 series can handle booklet creation easily and efficiently.



Fold here.

#### • N-up Printing

Create multiple copies of the same page or photo onto one page. No need to cut and paste or print multiple times. N-up printing feature creates up to 16 images on one page and produces just the size you need.



#### • Poster Printing

Create large sized posters with the 'Poster' printing feature. Start with any size image and create proportional posters of any size. Print out is printed on many pages to create a seamless poster.





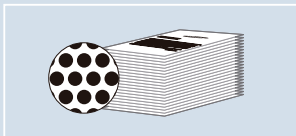
## 2. Paper Input Capacity

You won't have to worry about running out of paper in the middle of a huge print job with the ML-3560 series. With a convenient 1,100 page paper capacity composed of 500 sheets in the standard tray, an optional 500-sheet tray and 100 page MP, you'll save time printing what you really need.

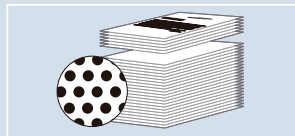


## 3. Toner Save Function

Toner Save Mode reduces toner consumption about 40%, giving you more printing pages per toner cartridge. You can reduce your budget by simply pressing a button or by controlling your driver. Printouts are slightly lighter with the same resolution.



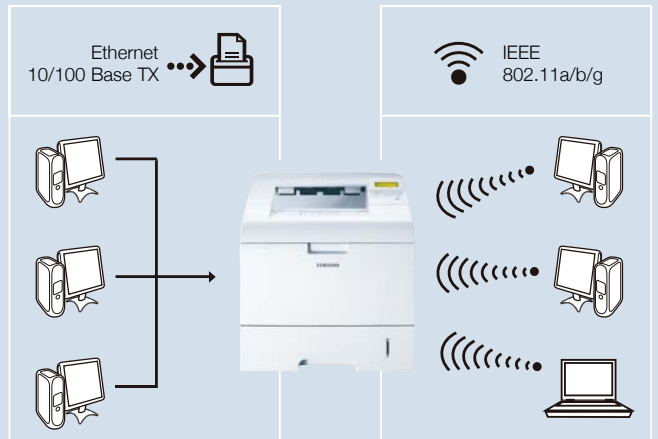
**High Yield Toner**  
12,000 sheets



**Toner Yield with one touch save function**  
12,000 sheets + 4,800 sheets

## 4. Wired & Wireless Network Printing

ML-3560 series offers network printing capabilities to easily connect your workplace, including an Ethernet interface capable of being cabled directly into your network and providing high speed wireless network connectivity. Security features with advanced encryption (TKIP, CCMP-AES) and authentication (802.1x, WPA-PSK) are supported.

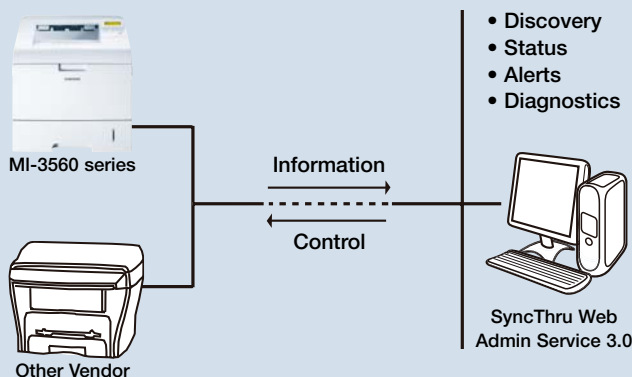


# Professional Solutions

## 1. Practical Network Management Tools for efficient network configurations

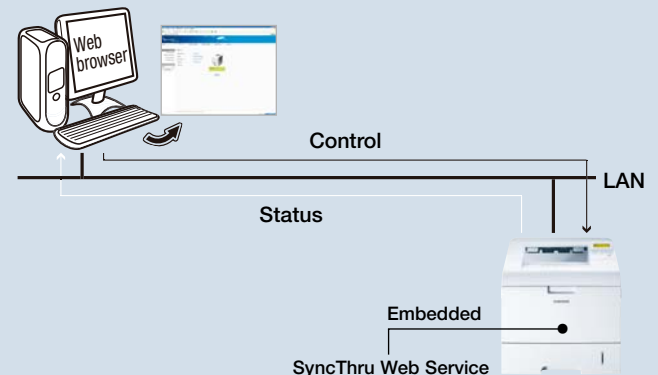
### SyncThru Web Admin Service ver. 3.0

SyncThru Web Admin Service is a web-based management tool for configuring printers, checking device status, performing remote diagnostics, receiving alerts when possible problems occur, and changing settings without leaving your desk. Available on Samsung network printers and other SNMP compliant printers.



### SyncThru Web Service

Increase productivity with SyncThru Web Service. This user friendly printer configuration tool requires no installation in the form of embedded web server that can be accessed by web-browser. It provides administrators with the ability to change network and individual printer settings, upgrade firmware and view network printer status.



## 2. Expanded Printing Capabilities with Hard Disk Solution

Expand your printer's capabilities by adding a hard disk. By upgrading to a 40 GB hard disk, the Samsung ML-3560 series performs additional features like collating and reprinting without sending the print job again, storing and delaying print until you are ready, and increasing security by requiring a PIN code before printing.

### Securely Manage & Control Network Print Jobs

A fully integrated solution that offers convenient management and control for network print jobs with 5 modes available, simply through printer driver.

#### Collate



The ML-3560 series can efficiently print large documents even when you are printing multiple copies. Choose 'Collate' and the job is sent only once and multiple collated sets are produced by the printer reducing PC overload.

#### Proof Print



When multiple copies are printed, the ML-3560 series prints out one copy for proofing, and holds the remaining copies. After approving the proofed print job, the user can use the control panel to print the remaining pages.

#### Delayed Print



Don't make everyone wait while you print a large document. Store the print job and program the printer to print it at a more convenient time.

#### Store Job



Store the print job in the printer so you don't need to send it again from your computer. Later, when you need to print, access the print job from the control panel. If the print job is stored in the public folder, anyone can access it and print it, making networking easier. Or, store the print job in the private folder and secure it with a 4-digit PIN code so that you can control access.

#### Confidential Print



Network printers are often centrally located and everyone collects their print jobs there. With the ML-3560 series you can maintain privacy by having the printer hold the print job until you enter your 4-digit PIN into the printer's control panel.

## JMS (Job Management System)

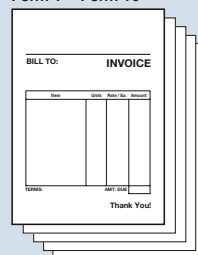
In addition to enhanced network features like SyncThru Web Service, the ML-3560 series support JMS (Job Management System). With an installed network card and an optional hard disk, JMS is an interface that manages active and stored print jobs, saves and applies Forms Overlay on HDD, and shows the completed job history, user accounts, and logs. JMS can only be used with SyncThru Web Service.



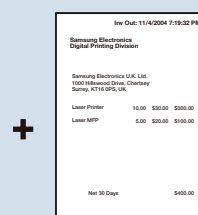
## Forms Overlay

Forms Overlay function saves time and effort by allowing you to print on pre-formatted templates and forms. Also, this function makes it easy to distinguish which department created the document as it can be marked with pre-formatted departmental information. The formatting instructions and data can be stored on the ML-3560 series [with Hard Disk installed]. When new data is available this can be changed and incorporated in the new print job. This function is suitable for mailings and large volume printouts. In addition, frequently used forms can be pre-configured and easily printed out from the Hard Disk and so reduces the workload on the PC and network traffic.

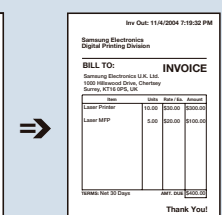
#### Form 1 ~ Form 10



Forms Stored on Printer



Data from PC



Printed Output

## 3. Solution for Printing Barcodes

The ML-3560 is available with a cost effective barcode printing solution that integrates seamlessly into your enterprise applications. Barcode technology has significantly improved efficiency of automatic data collection processes and lowered associated costs. Samsung barcode solutions are compatible with standard PCL5e applications and support 40 industry standard barcodes plus 1-dimensional and 2-dimensional standards. No specialized drivers are required which reduces integration time and cost. Please contact Samsung Electronics for more information about the barcode function. In order to assure that the barcode function will integrate with your applications, the barcode function must be ordered directly from Samsung Electronics.

